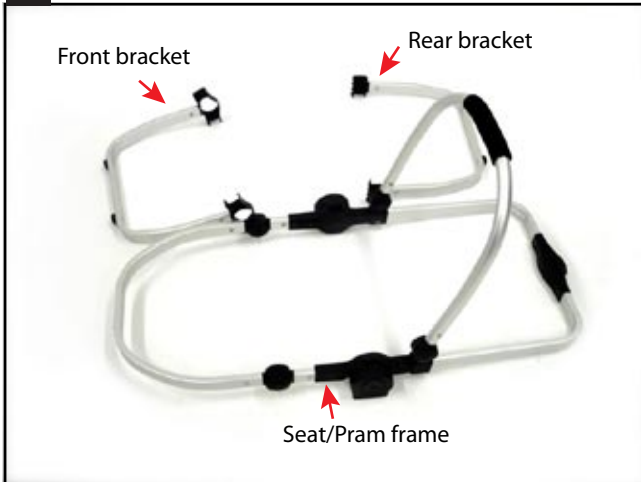


i'coo

Pram assembly guide

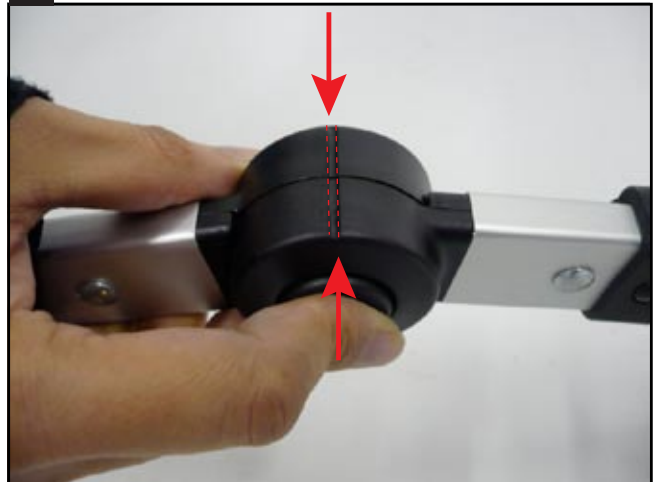
Targo

1



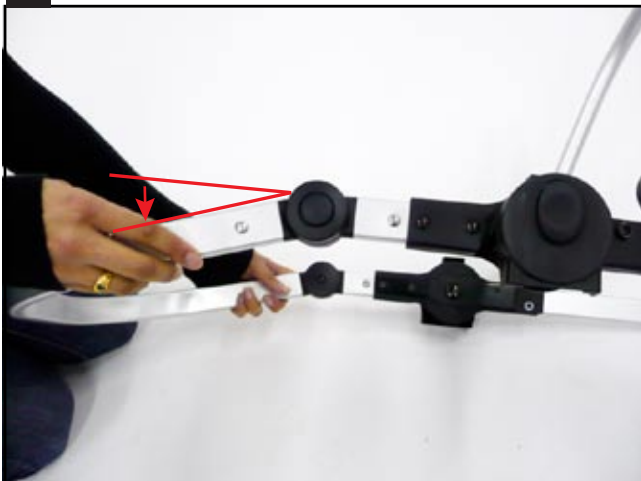
Begin by removing the seat fabric to reveal seat frame. You will require the Pram or Bassinet brackets for the next step.

2



Angle the frame by pushing adjustment buttons. Match the notched lines to ensure the frame angles 15°.

3



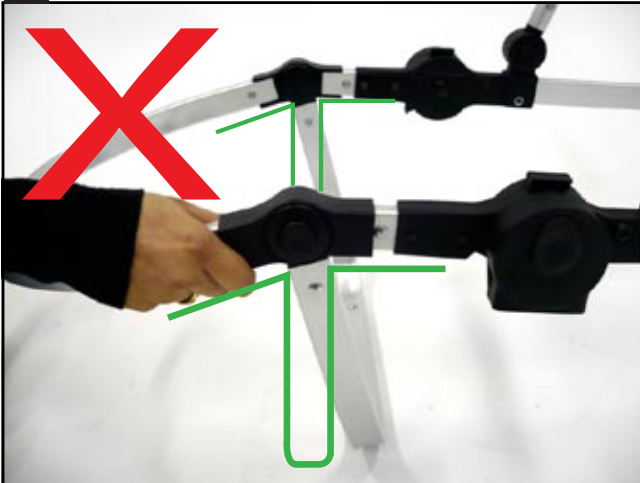
Note that the foot of the frame angles downward and is not straight.

4



Place front bracket on frame so that the feet of bracket will rest flat on floor. **WARNING!** If you put the front bracket on backwards the feet will not sit properly on the floor. See step 5 for details.

5



WRONG!

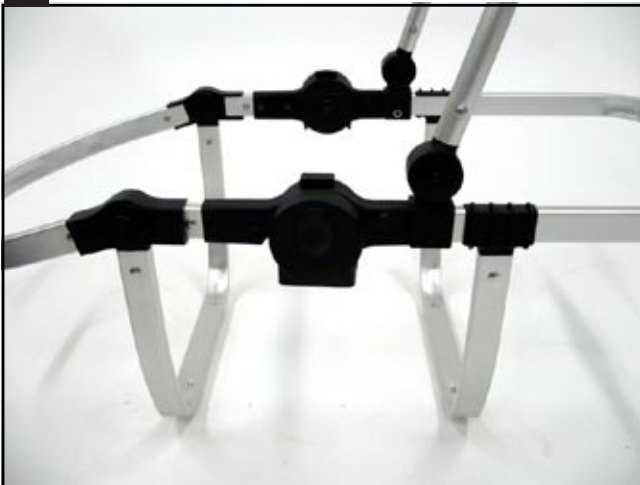
The bracket in this image is incorrect! The bracket must be reversed so that the feet will sit on as in image 7.

6



Rear bracket should be positioned near adjustable canopy assembly. Frame should look as below.

7



Note the positioning of the front and rear pram brackets. They site squarely to the floor on the pram's feet.

8



Place pram fabric into position within the frame cradle.



GRAND TOURING BABY

WWW.GTBABY.COM

9



Secure the pram feet by pushing the clips into brackets on the bottom of the fabric.

10



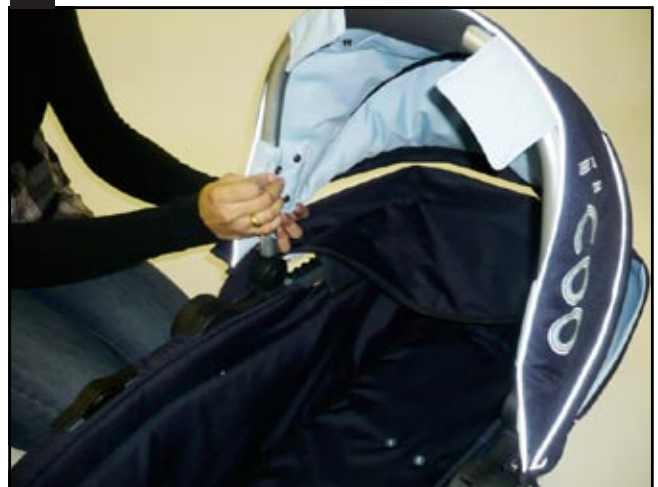
Button fabric around the pram frame.

11



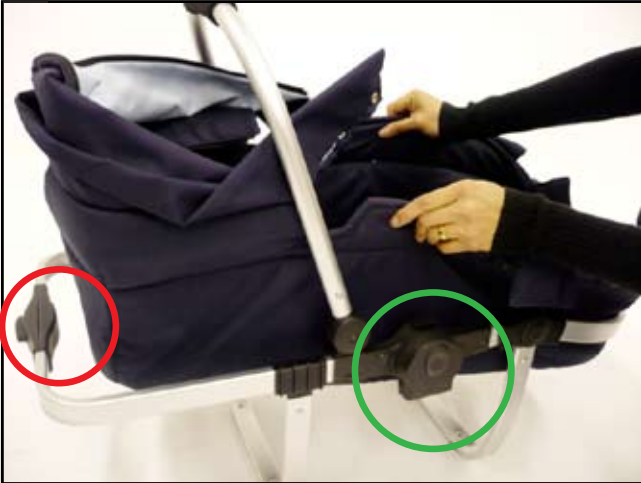
Fold fabric at the head of the pram and zip up to cover and pad the frame.

12



Secure pram canopy by snapping buttons over canopy bar and zip up canopy around rear of pram.

13



Before attaching pram to stroller frame, be sure that the attachment assembly (green circle) is facing straight downward. To turn them, simply press the "recline" trigger (red) and turn them by hand to face down.

14



The recline trigger is located at the head of the stroller beneath the fabric. In this picture the attachment assembly is correctly facing down and circled in green.

15



Insert pram padding and position boot cover over top of pram.

16



Secure pram to frame and raise frame to pram level.